



# K.R. MANGALAM UNIVERSITY

## PARENT FEEDBACK ANALYSIS REPORT

ACADEMIC SESSION 2021-22



**Feedback Committee**

**Internal Quality Assurance Cell (IQAC)**

*Tarun Singh*  
Chairperson  
Feedback Committee  
K.R. Mangalam University  
Gurugram, Haryana

*Meenu*  
1  
IQAC  
K.R. Mangalam University,  
Sohna Road, Gurugram-122103

*Indu*  
Registrar  
K.R. Mangalam University  
Sohna Road, Gurugram, (Haryana)



## **ALUMNI FEEDBACK ON CURRICULUM DESIGN, TEACHING-LEARNING AND EVALUATION**

### **Introduction**

In order to ensure that students have an experiential and holistic learning experience, the Internal Quality Assurance Cell (IQAC) of K R Mangalam University collects feedback from various stakeholders for the purpose of continuous quality improvement in the courses offered in various programmes.

K.R Mangalam University immensely values its students and strives to develop ensuring bonding with them. The Internal Quality Assurance Cell (IQAC) of K.R Mangalam University collected feedback from parents for the purpose of continuous quality improvement in the courses offered in various academic programmes Their feedback is important as it helped IQAC understand their views and insights on various aspects of the University and implement actions for improvement in curriculum, making student learning experiences more enriching and enhancing the credibility of the University.

### **Analysis**

The Feedback Committee designed the Feedback Form and collected responses from the parents. The feedback was collected and analysed in the following aspects:


Section I: Curriculum Design and Development


Section II: Teaching-Learning, Evaluation and Student Support

Section III: Suggestions

Section-wise analysis of the feedback received from the parents is presented as under:

  
Chairperson  
Feedback Committee  
K.R Mangalam University  
Gurugram, Haryana

  
IQAC  
K.R. Mangalam University,  
Sohna Road, Gurugram-122103

  
Registrar  
K.R. Mangalam University  
Sohna Road, Gurugram, (Haryana)

### Section I: Curriculum Design and Development

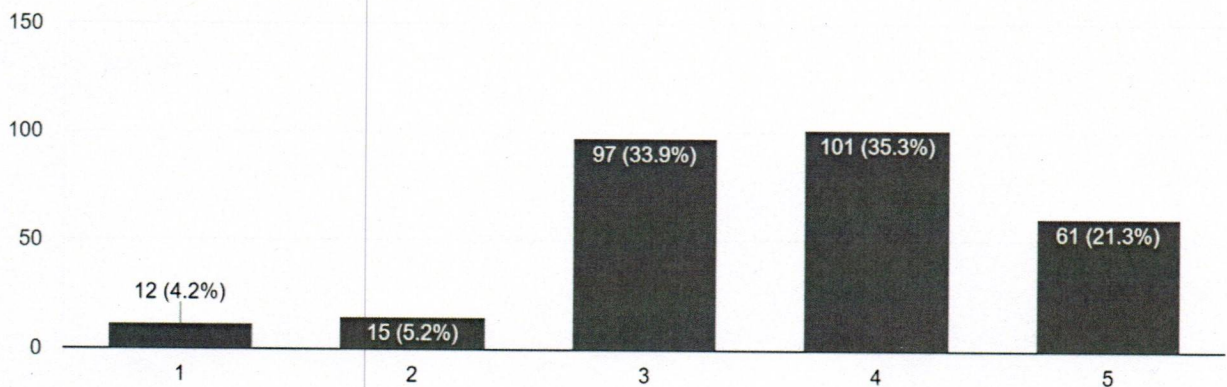
S. No	Statement	Average Score*
1	Rate the quality and relevance of courses included in this academic session that have been studied by your ward, in terms of its relevance for next level academic goals (higher education/placements).	<b>3.64</b>
2	Rate the course curriculum in terms of developing entrepreneurship skills in your ward to initiate start-ups by University Incubation Centre.	<b>3.47</b>
3	Rate the outcomes that your ward has achieved after studying the courses in this academic session.	<b>3.69</b>

**\*On 5 point rating scale**

Poor-1  
Average-2  
Good-3  
Very Good-4  
Excellent-5

Rate the quality and relevance of courses included in this academic session that have been studied by your ward, in terms of its relevance for next level academic goals (higher education/placements).

286 responses



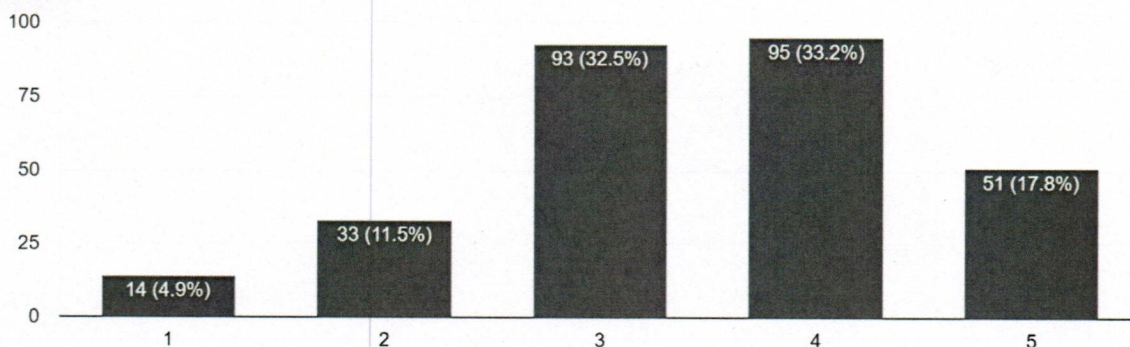
*Taru Singh*  
Chairperson  
Feedback Committee  
K.R Mangalam University  
Gurugram, Haryana

*Meer*  
IQAC  
K.R. Mangalam University,  
Sohna Road, Gurugram-122103

*Jm*  
Registrar  
K.R. Mangalam University  
Sohna Road, Gurugram, (Haryana)

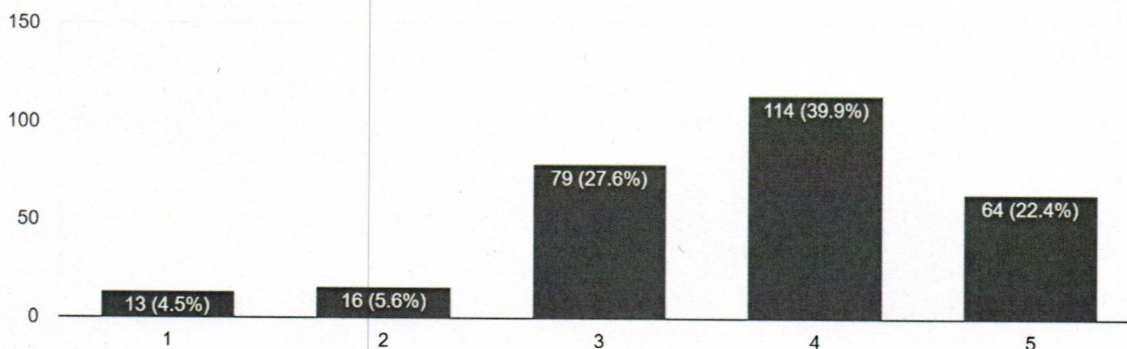
Rate the course curriculum in terms of developing entrepreneurship skills in your ward to initiate start-ups by University Incubation Centre.

286 responses



Rate the outcomes that your ward has achieved after studying the courses in this academic session.

286 responses



## Section II: Teaching-Learning, Evaluation and Student Support

S. No	Statement	Average Score*
4	Rate the quality of teaching and training provided to your ward.	3.65
5	Rate the adequacy of physical and infrastructural facilities of the University.	3.66
6	Rate the quality of academic and support facilities for learning provided by the University.	3.59
7	Rate the initiatives by the University to encourage participation of your ward in seminars, workshops, projects, industrial/field visits, internships.	3.57

*Tania Gupta*  
Chairperson  
Feedback Committee  
K.R Mangalam University  
Gurugram, Haryana

*Meenu*  
4 IQAC  
K.R. Mangalam University,  
Sohna Road, Gurugram-122103

*Jind*  
Registrar  
K.R. Mangalam University  
Sohna Road, Gurugram, (Haryana)

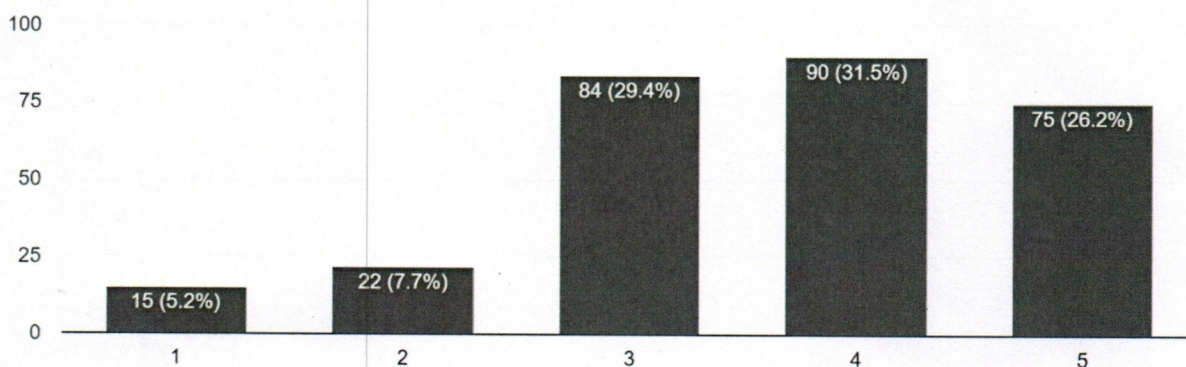
8	Rate the initiatives of the University for holistic development of your ward through co-curricular, cultural, sports and extension activities.	3.57
9	Rate the development of soft skills and sensitivity of your ward towards issues like gender equality, environment and sustainability, ethics through curricular and co-curricular activities while studying in the University.	3.62
10	Rate the effectiveness of continuous evaluation mechanism of the University.	3.58
11	Rate the effectiveness of Student Mentoring and Counseling Services for academic and other related issues of students.	3.54
12	Rate the career orientation and placement support provided by the University.	3.39
13	The University offered good campus facilities and learning ambience to your ward.	Yes- 83.9 % No- 16.1 %
14	You recommend KRMU to your siblings, friends, relatives, etc for their higher studies.	Yes- 66.1 % No-33.9%

\*On 5 point rating scale

Poor-1  
Average-2  
Good-3  
Very Good-4  
Excellent-5

Rate the quality of teaching and training provided to your ward.

286 responses



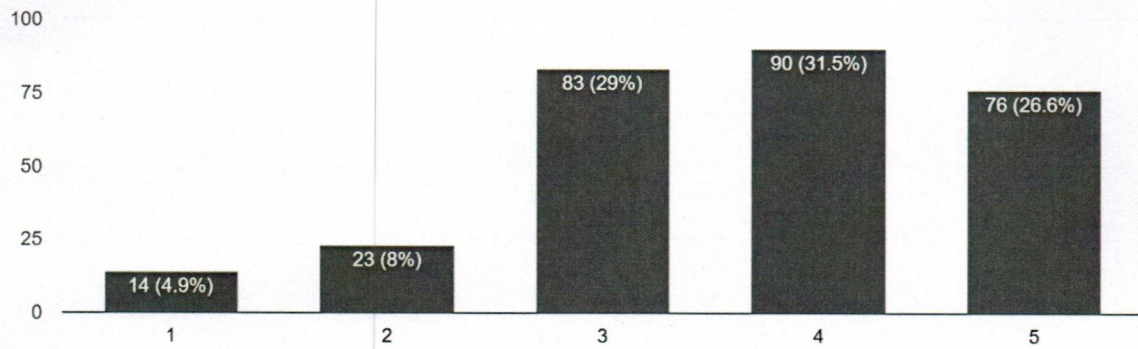
*Tanis Singh*  
Chairperson  
Feedback Committee  
K.R Mangalam University  
Gurugram, Haryana

*Meena*  
5  
IQAC  
K.R. Mangalam University,  
Sohna Road, Gurugram-122103

*J.P.*  
Registrar  
K.R. Mangalam University  
Sohna Road, Gurugram, (Haryana)

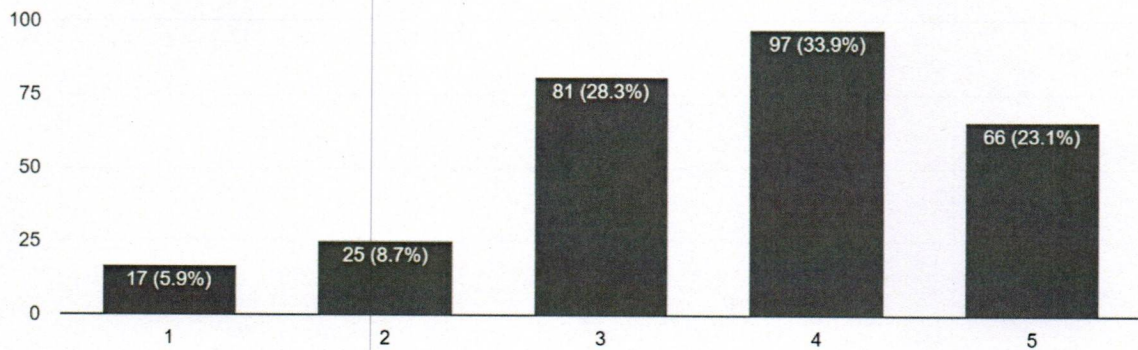
Rate the adequacy of physical and infrastructural facilities of the University.

286 responses



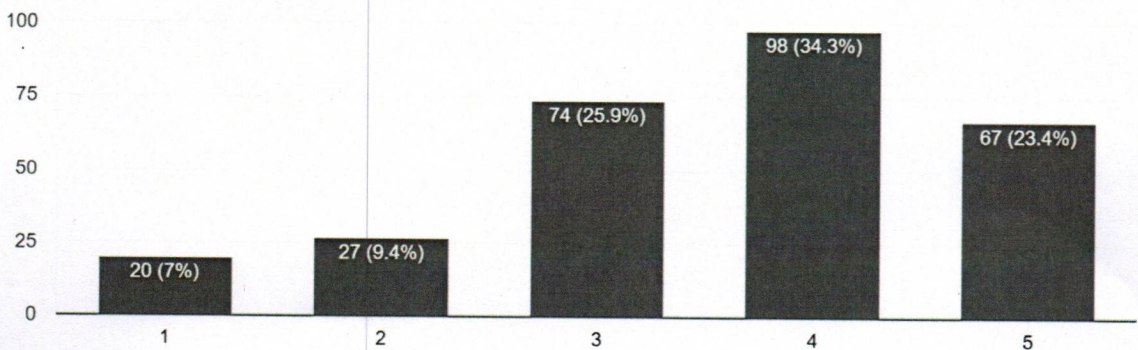
Rate the quality of academic and support facilities for learning provided by the University.

286 responses



Rate the initiatives by the University to encourage participation of your ward in seminars, workshops, projects, industrial/field visits, internships.

286 responses



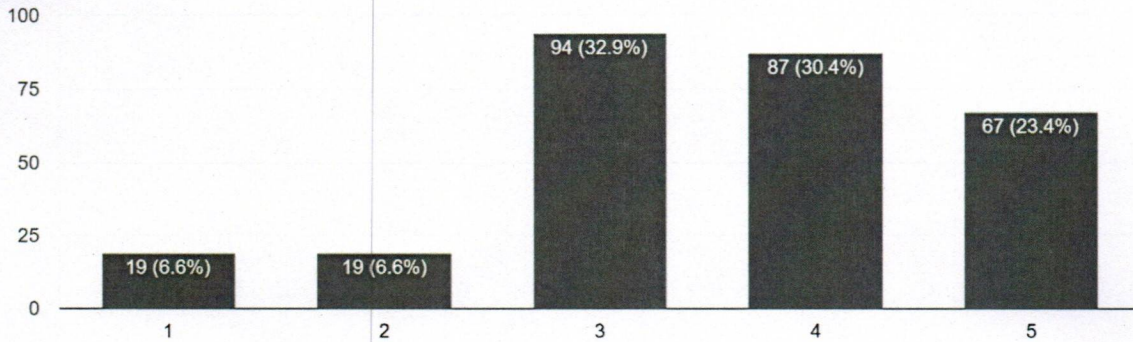
*Tarun Singh*  
Chairperson  
Feedback Committee  
K.R. Mangalam University  
Gurugram, Haryana

*meenu*  
6 IQAC  
K.R. Mangalam University,  
Sohna Road, Gurugram-122103

*Jind*  
Registrar  
K.R. Mangalam University  
Sohna Road, Gurugram, (Haryana)

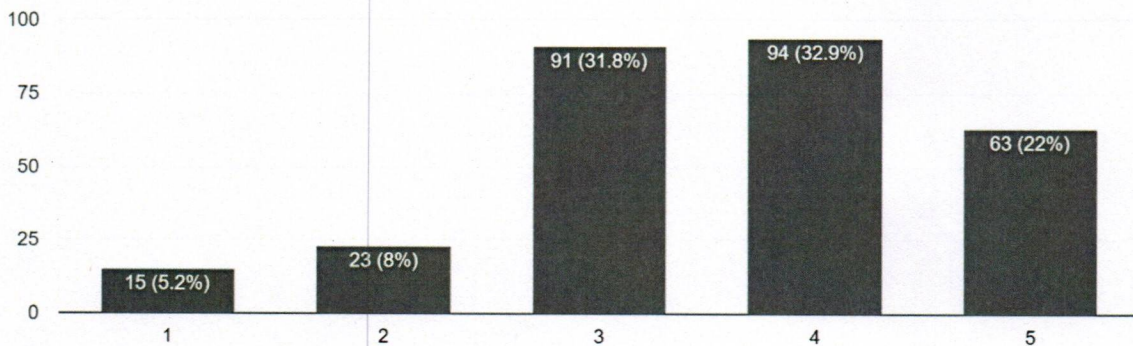
Rate the initiatives of the University for holistic development of your ward through co-curricular, cultural, sports and extension activities.

286 responses



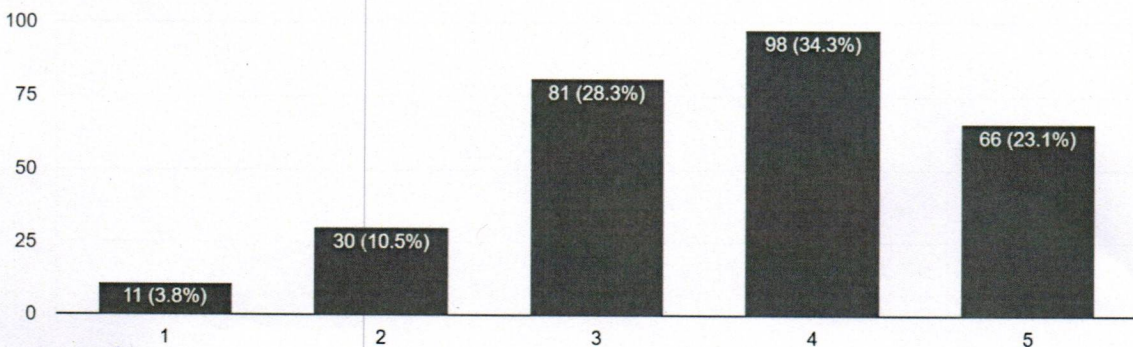
Rate the effectiveness of continuous evaluation mechanism of the University.

286 responses



Rate the development of soft skills and sensitivity of your ward towards issues like gender equality, environment and sustainability, ethics through curricular activities while studying in the University.

286 responses



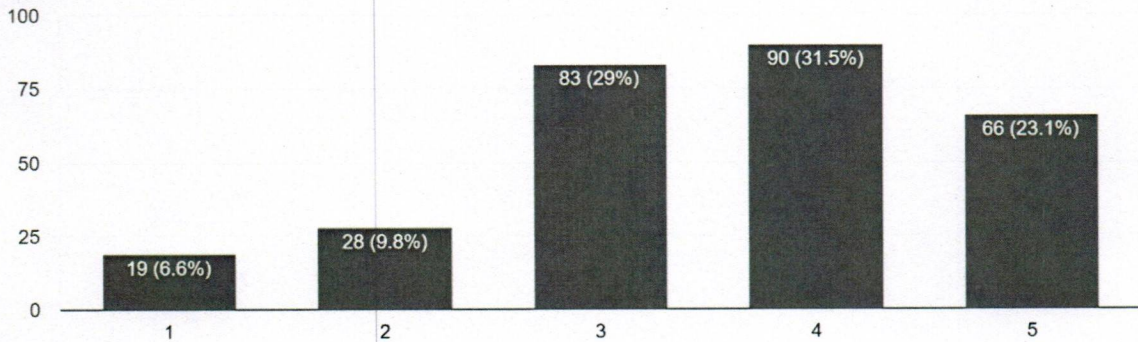
*Tausiqul*  
 Chairperson  
 Feedback Committee  
 K.R Mangalam University  
 Gurugram, Haryana

*meena*  
 7 IQAC  
 K.R. Mangalam University,  
 Sohna Road, Gurugram-122103

*Jit*  
 Registrar  
 K.R. Mangalam University  
 Sohna Road, Gurugram, (Haryana)

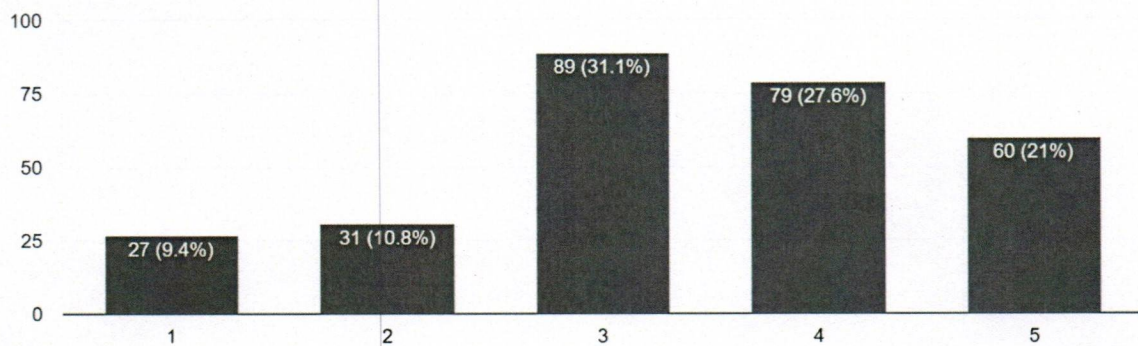
Rate the effectiveness of Student Mentoring and Counseling Services for academic and other related issues of students.

286 responses



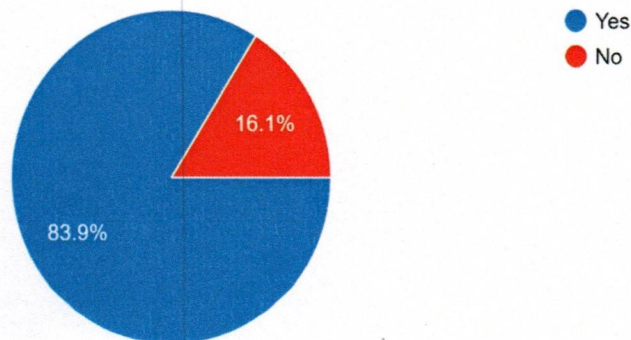
Rate the career orientation and placement support provided by the University.

286 responses



The University offered good campus facilities and learning ambience to your ward.

286 responses



*Tania Gupta*  
Chairperson  
Feedback Committee  
K.R Mangalam University  
Gurugram, Haryana

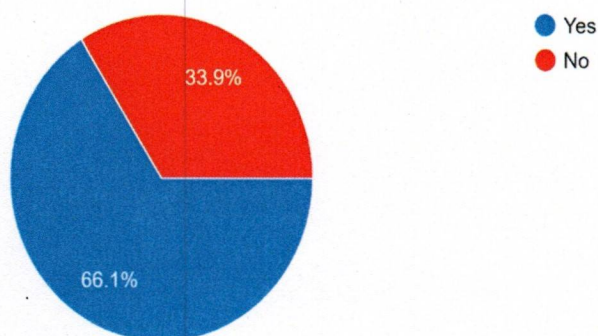
*Meenu*  
IQAC  
K.R. Mangalam University,  
Sohna Road, Gurugram-122103

*Jitendra*  
Registrar  
K.R. Mangalam University  
Sohna Road, Gurugram, (Haryana)



You recommend KRMU to your siblings, friends, relatives, etc for their higher studies.


286 responses




### Section III: Suggestions

#### 15 Please give suggestions if any.

- Preparation for competitive exams and organize guest lecturers form IAS / IPS officers at University campus.
- Engage students in extra curricular activities.
- Provide more opportunities of internships for the concerned field to enhance skills and performance.
- The management should respond to the needs of the students as they panic when a student is late in paying the fee and students are reminded of this daily.
- Include more Moot Competitions in the Law curriculum.
- Retain experienced teaching staff and appoint good administrators.
- University must define uniform for students.
- Placements needs to be enhanced providing students opportunities with a high package of salary.
- Bus facility should improve such as AC cooling.
- Requirement of more qualified Professors.
- The curriculum of the course should be designed in a more relevant and competent manner so as to give the students an edge over the students of other universities.
- The cleanliness of restrooms should improve.
- Provide opportunities to students to visit different industries.
- Organize more workshops for students.
- The mid-term exams should be kept at a gap of a day at least in between to help students prepare well and reduce their stress.
- Increase food facilities in the campus.

  
Chairperson  
Feedback Committee  
K.R Mangalam University  
Gurugram, Haryana

  
9 IQAC  
K.R. Mangalam University,  
Sohna Road, Gurugram-122103

  
Registrar  
K.R. Mangalam University  
Sohna Road, Gurugram, (Haryana)