



K.R. MANGALAM UNIVERSITY

K.R. MANGALAM UNIVERSITY

PARENT FEEDBACK ANALYSIS REPORT

ACADEMIC SESSION 2024-25



Feedback Committee

Internal Quality Assurance Cell (IQAC)

Tarun Gupta
Chairperson
Feedback Committee
K.R. Mangalam University
Gurugram, Haryana

Tarun Gupta
Director IQAC
K.R. Mangalam University
Sohna road, Gurugram
Haryana 122103

[Signature]
Registrar
K.R. Mangalam University
Sohna Road, Gurugram (Harya



ALUMNI FEEDBACK ON CURRICULUM DESIGN, TEACHING-LEARNING AND EVALUATION

Introduction

In order to ensure that students have an experiential and holistic learning experience, the Internal Quality Assurance Cell (IQAC) of K R Mangalam University collects feedback from various stakeholders for the purpose of continuous quality improvement in the courses offered in various programmes.

K.R Mangalam University immensely values its students and strives to develop ensuring bonding with them. The Internal Quality Assurance Cell (IQAC) of K.R Mangalam University collected feedback from parents for the purpose of continuous quality improvement in the courses offered in various academic programmes Their feedback is important as it helped IQAC understand their views and insights on various aspects of the University and implement actions for improvement in curriculum, making student learning experiences more enriching and enhancing the credibility of the University.

Analysis

The Feedback Committee collected responses from the parents. The feedback questionnaire was executed via Google Forms and sent to parents. 299 responses were received.

The feedback collected was analyzed in the following aspects:

Section I: Curriculum Design and Development

Section II: Teaching-Learning, Evaluation and Student Support

Section III: Suggestions

Graphical representation of Parents' Profile and the section-wise analysis of the parent responses in the feedback form is presented as under:

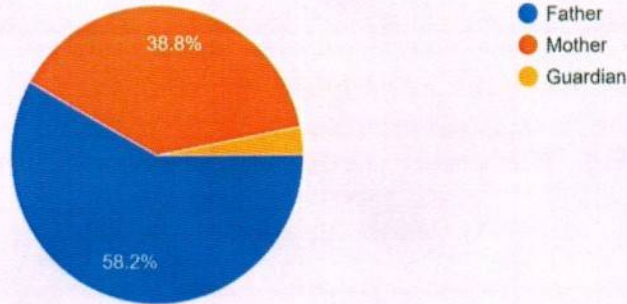

Chairperson
Feedback Committee
K.R Mangalam University
Gurugram, Haryana


Registrar
K.R. Mangalam University
Sohna Road, Gurugram (Haryana)

Parents Profile

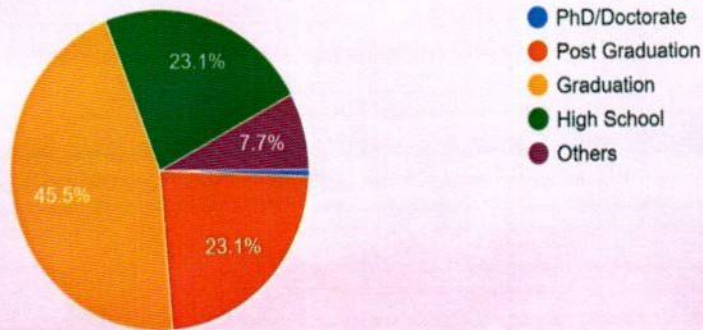
Relationship of Parent with Student:

299 responses



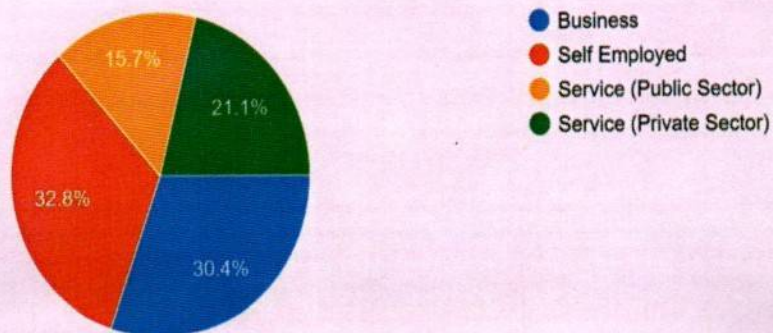
Highest Educational Qualifications of the Parent

299 responses



Occupation of the Parent:

299 responses



Tarini Arora
Chairperson
Feedback Committee
K.R Mangalam University
Gurugram, Haryana


Registrar
K.R. Mangalam University
Sohna Road, Gurugram (Haryana)

Section I: Curriculum Design and Development
(N= 163)

S. No	Statement	Strongly Disagree		Disagree		Neutral		Agree		Strongly Agree	
		N	%	N	%	N	%	N	%	N	%
1	Rate the quality and relevance of courses included in this academic session that have been studied by your ward, in terms of its relevance for next level academic goals (higher education/placements).	5	1.7	18	6	89	29.8	111	37.1	76	25.6
2	Rate the course curriculum in terms of developing entrepreneurship skills in your ward to initiate start-ups by University Incubation Centre.	13	4.3	27	9	87	29.1	103	34.4	69	23.1
3	Rate the outcomes that your ward has achieved after studying the courses in this academic session.	5	1.7	12	4	69	23.1	114	38.1	99	33.1

***On 5 point rating scale**

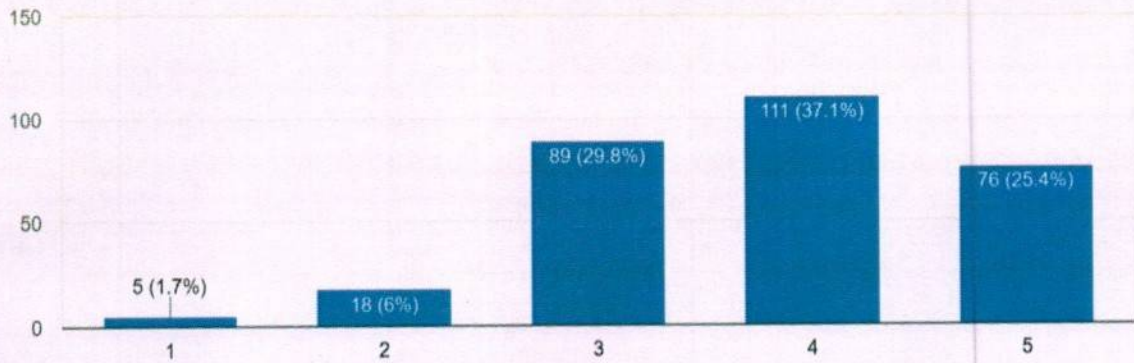
Poor-1 Average-2 Good-3 Very Good-4 Excellent-5


 Chairperson
 Feedback Committee
 K.R Mangalam University
 Gurugram, Haryana


 Registrar
 K.R. Mangalam University
 Sohna Road, Gurugram (Haryana)

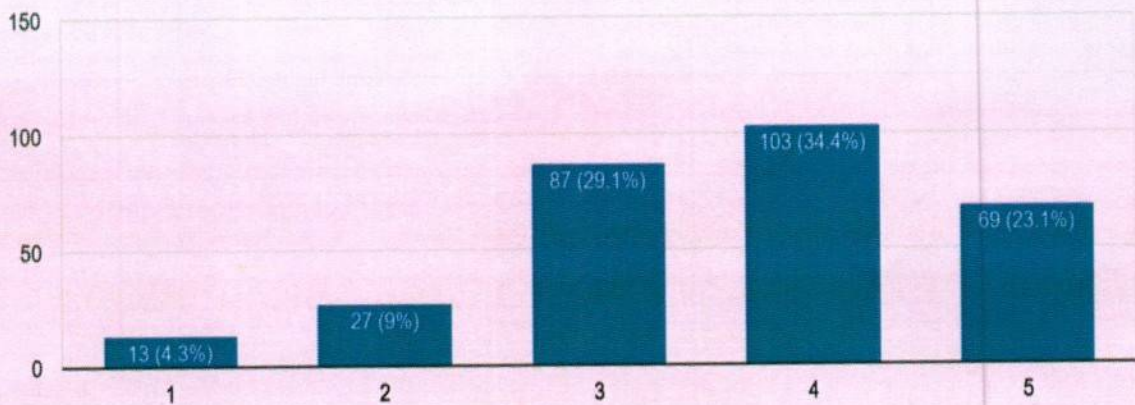
Rate the quality and relevance of courses included in this academic session that have been studied by your ward, in terms of its relevance for next level academic goals (higher education/placements).

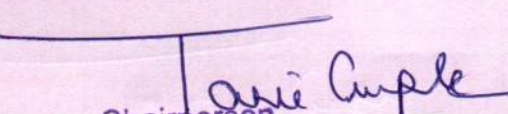
299 responses



Rate the course curriculum in terms of developing entrepreneurship skills in your ward to initiate start-ups by University Incubation Centre.

299 responses

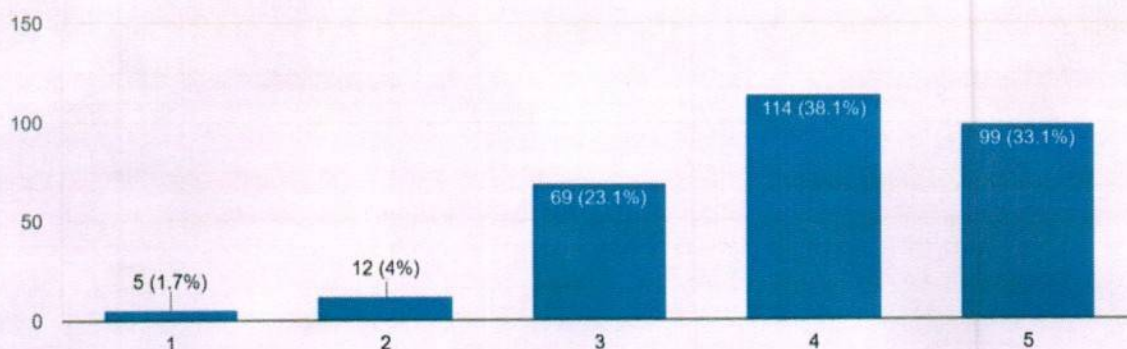



Chairperson
Feedback Committee
K.R Mangalam University
Gurugram, Haryana


Registrar
K.R. Mangalam University
Sohna Road, Gurugram (Haryana)

Rate the outcomes that your ward has achieved after studying the courses in this academic session.

299 responses



**Section II: Teaching-Learning, Evaluation and Student Support
(N= 163)**

S. No	Statement	Strongly Disagree		Disagree		Neutral		Agree		Strongly Agree	
		N	%	N	%	N	%	N	%	N	%
4	Rate the quality of teaching and training provided to your ward.	8	2.7	12	4	64	21.4	116	38.8	99	33.1
5	Rate the adequacy of physical and infrastructural facilities of the University.	13	4.3	20	6.7	66	22.1	104	34.8	99	32.1
6	Rate the quality of academic and support facilities for learning provided by the University.	10	3.3	18	6	72	24.1	108	34.1	91	30.4
7	Rate the initiatives by the University to encourage participation of your ward in seminars, workshops, projects, industrial/field visits, internships.	6	2	22	7.4	74	24.7	101	33.8	96	32.1

Chairperson
Feedback Committee
K.R Mangalam University
Gurugram, Haryana

Registrar
K.R. Mangalam University
Sohna Road, Gurugram (Haryana)

8	Rate the initiatives of the University for holistic development of your ward through co-curricular, cultural, sports and extension activities.	16	5.4	20	6.7	70	23.4	106	35.5	87	29.1
9	Rate the development of soft skills and sensitivity of your ward towards issues like gender equality, environment and sustainability, ethics through curricular and co-curricular activities while studying in the University.	12	4	16	5.4	73	24.4	107	35.8	91	30.4
10	Rate the effectiveness of continuous evaluation mechanism of the University.	14	4.7	15	5	74	24.7	114	38.1	82	27.4
11	Rate the effectiveness of Student Mentoring and Counselling Services for academic and other related issues of students.	10	3.3	11	3.7	74	24.7	111	37.1	93	31.1
12	Rate the career orientation and placement support provided by the University.	23	7.7	28	9.4	88	29.4	87	29.1	73	24.4
13	The University offered good campus facilities and learning	Yes- 90.6 % No- 9.4 %									

Chairperson
 Feedback Committee
 K.R Mangalam University
 Gurugram, Haryana

Registrar
 K.R. Mangalam University
 Sohna Road, Gurugram (Haryana)

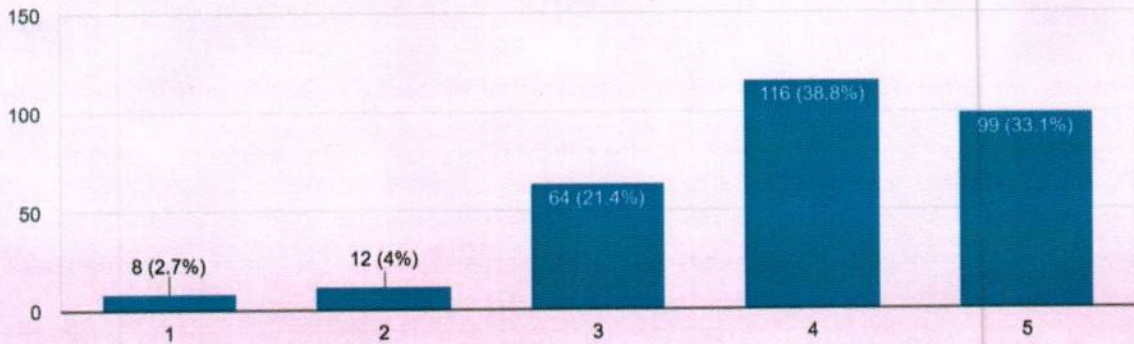
	ambience to your ward.	
14	You recommend KRMU to your siblings, friends, relatives, etc for their higher studies.	Yes- 71.6 % No- 28.4 %

*On 5 point rating scale

Poor-1
Average-2
Good-3
Very Good-4
Excellent-5

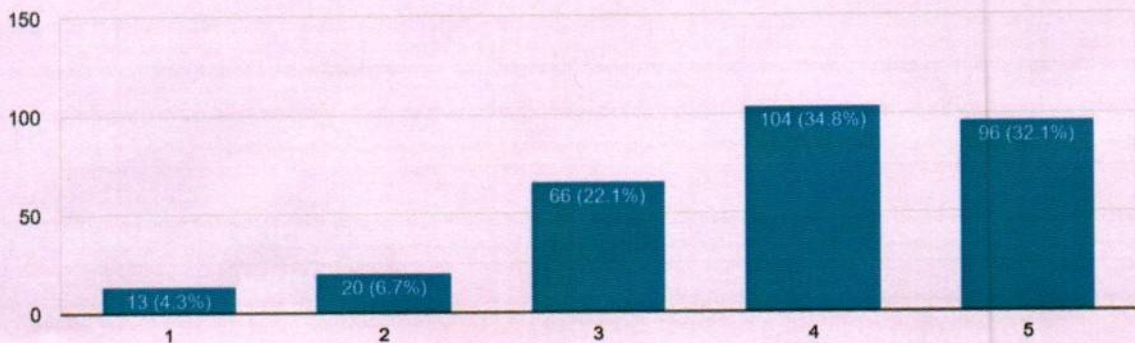
Rate the quality of teaching and training provided to your ward.

299 responses



Rate the adequacy of physical and infrastructural facilities of the University.

299 responses

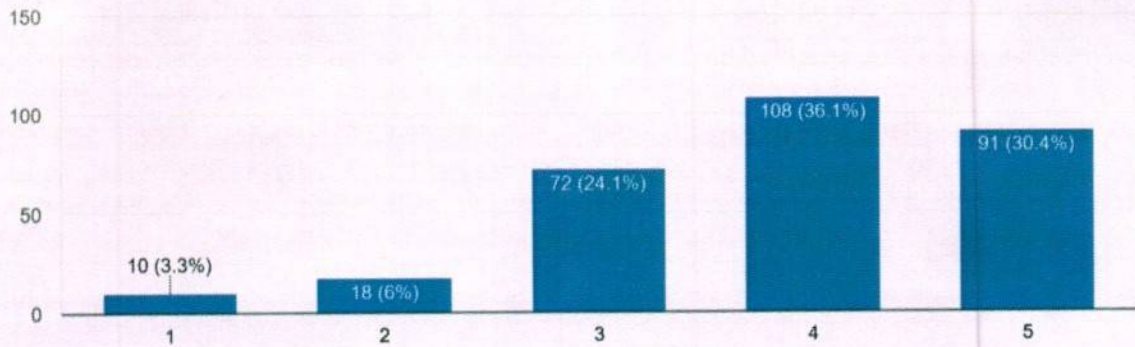


Tarjeet Singh
Chairperson
Feedback Committee
K.R Mangalam University
Gurugram, Haryana

[Signature]
Registrar
K.R. Mangalam University
Sohna Road, Gurugram (Haryana)

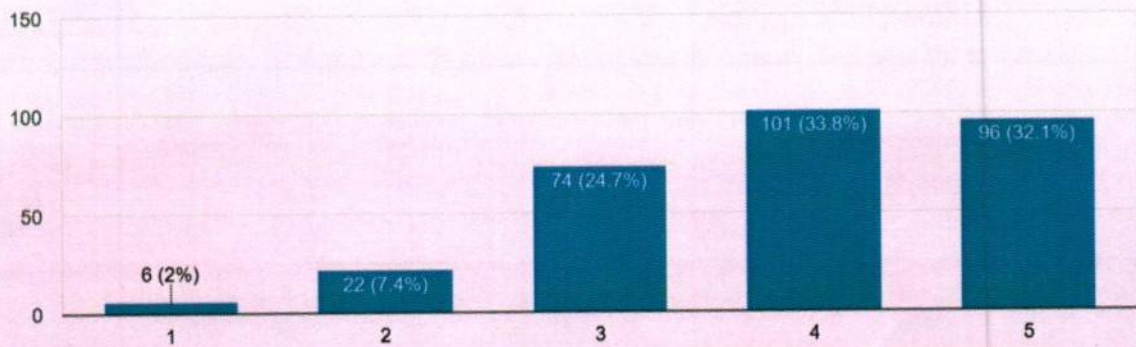
Rate the quality of academic and support facilities for learning provided by the University.

299 responses



Rate the initiatives by the University to encourage participation of your ward in seminars, workshops, projects, industrial/field visits, internships.

299 responses

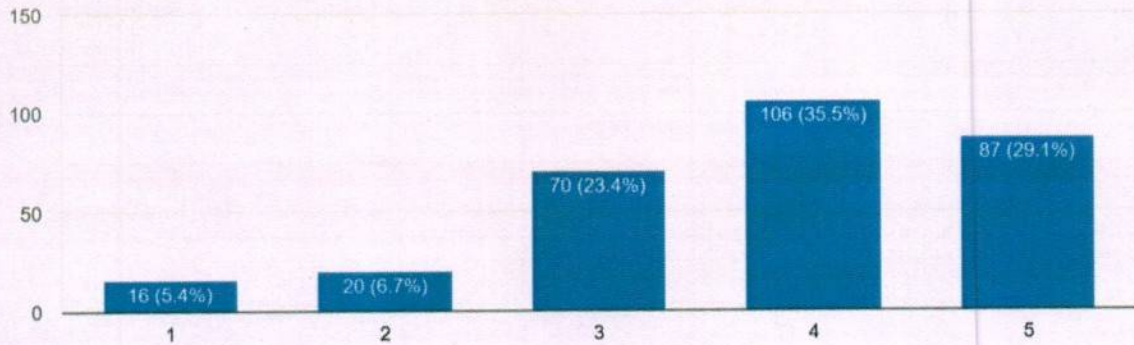


Tarun Gupta
Chairperson
Feedback Committee
K.R Mangalam University
Gurugram, Haryana

R
Registrar
K.R. Mangalam University
Sohna Road, Gurugram (Haryana)

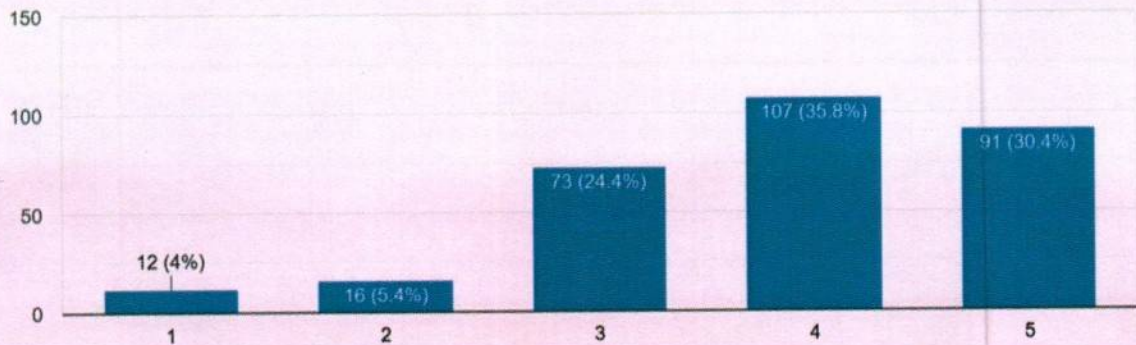
Rate the initiatives of the University for holistic development of your ward through co-curricular, cultural, sports and extension activities.


299 responses



Rate the development of soft skills and sensitivity of your ward towards issues like gender equality, environment and sustainability, ethics through curricular activities while studying in the University.

299 responses

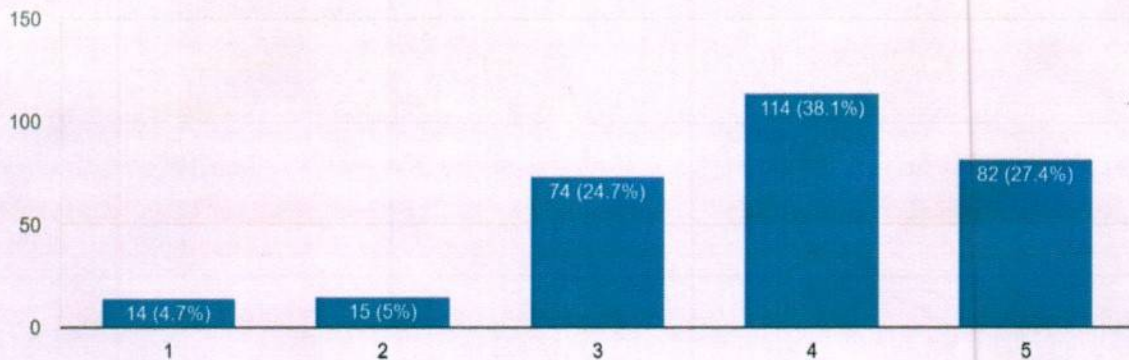



Chairperson
Feedback Committee
K.R Mangalam University
Gurugram, Haryana


Registrar
K.R. Mangalam University
Sohna Road, Gurugram (Haryana)

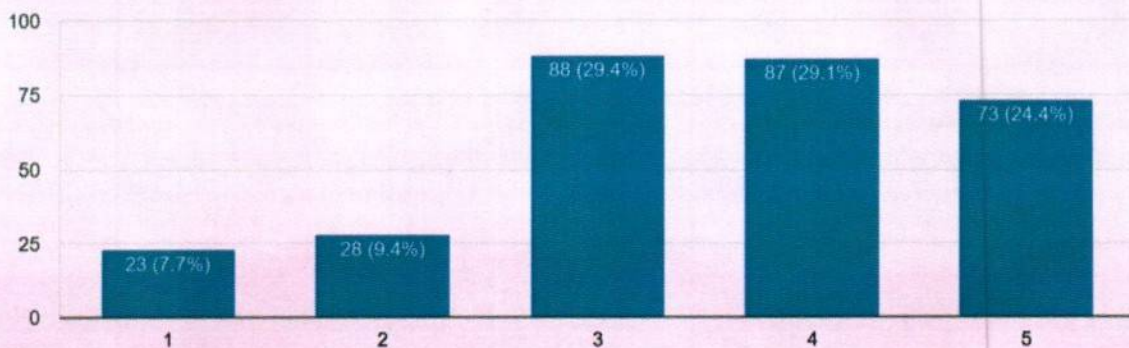
Rate the effectiveness of continuous evaluation mechanism of the University.

299 responses



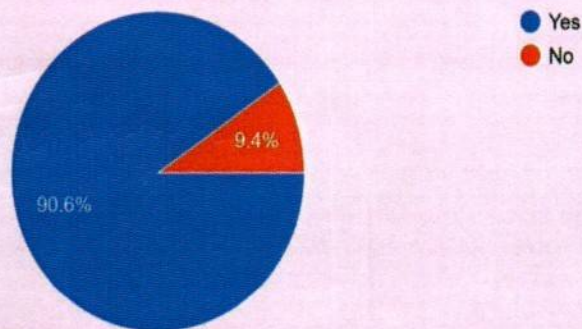
Rate the career orientation and placement support provided by the University.

299 responses



The University offered good campus facilities and learning ambience to your ward.

299 responses

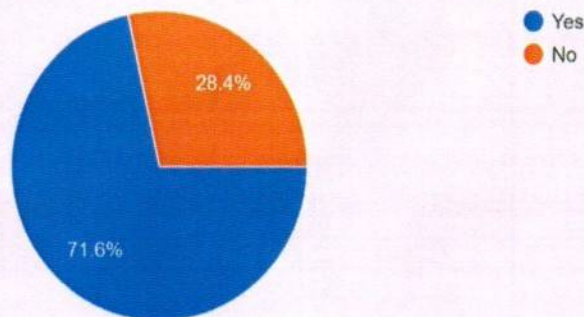


Tani Gupta

Chairperson
Feedback Committee
K.R Mangalam University
Gurugram, Haryana

[Signature]
Registrar
K.R. Mangalam University
Sohna Road, Gurugram (Haryana)

You recommend KRMU to your siblings, friends, relatives, etc for higher studies.
299 responses



Section III: Suggestions

15 Please give suggestions if any.

- Strengthen practical exposure by increasing internships, industrial/field visits, hands-on seminars, and access to laboratory equipment and learning resources.
- Enhance student support and mentoring, including emotional guidance and closer educator-student coordination to help students realize their full potential.
- Improve placement and internship communication, ensuring timely information about opportunities, internship fairs, and career pathways.
- Ensure awareness of scholarship schemes, especially regarding eligibility and continuation at the time of admission.

Prof. (Dr.) Tania Gupta
Chairperson, Feedback Committee
K.R Mangalam University

Chairperson
Feedback Committee
K.R Mangalam University
Gurugram, Haryana

Dr. Rajesh Sharma
Registrar
K.R. Mangalam University
Sohna Road, Gurugram (Haryana)

Director IQAC
K.R. Mangalam University
Sohna road, Gurugram
Haryana 122103

Registrar
K.R. Mangalam University
Sohna Road, Gurugram (Haryana)