



# K.R. MANGALAM UNIVERSITY

## PARENT FEEDBACK ANALYSIS REPORT

ACADEMIC SESSION 2023-24



**Feedback Committee**

**Internal Quality Assurance Cell (IQAC)**

Registrar

K.R. Mangalam University  
Sohna Road, Gurugram (Haryana)

*Tare Anil*  
Chairperson  
Feedback Committee  
K.R. Mangalam University  
Gurugram, Haryana



## **ALUMNI FEEDBACK ON CURRICULUM DESIGN, TEACHING-LEARNING AND EVALUATION**

### **Introduction**

In order to ensure that students have an experiential and holistic learning experience, the Internal Quality Assurance Cell (IQAC) of K R Mangalam University collects feedback from various stakeholders for the purpose of continuous quality improvement in the courses offered in various programmes.

K.R Mangalam University immensely values its students and strives to develop ensuring bonding with them. The Internal Quality Assurance Cell (IQAC) of K.R Mangalam University collected feedback from parents for the purpose of continuous quality improvement in the courses offered in various academic programmes. Their feedback is important as it helped IQAC understand their views and insights on various aspects of the University and implement actions for improvement in curriculum, making student learning experiences more enriching and enhancing the credibility of the University.

### **Analysis**

The Feedback Committee collected responses from the parents. The feedback questionnaire was executed via Google Forms and sent to parents. 437 responses were received.


The feedback collected was analyzed in the following aspects:

#### **Section I: Curriculum Design and Development**

#### **Section II: Teaching-Learning, Evaluation and Student Support**

#### **Section III: Suggestions**

Graphical representation of Parents' Profile and the section-wise analysis of the parent responses in the feedback form is presented as under:

  
Chairperson  
Feedback Committee  
K R Mangalam University  
Gurugram Haryana

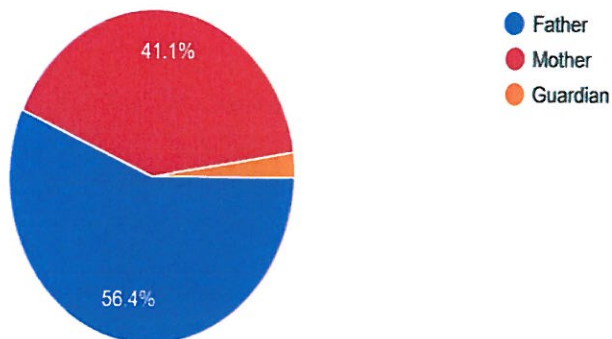
  
Registrar  
K R Mangalam University  
Sohna Road, Gurugram (Haryana)



## Parents Profile

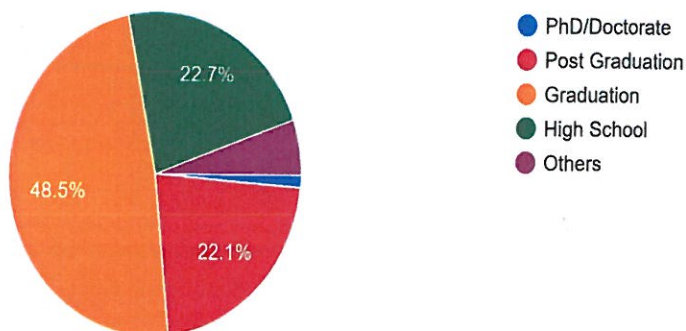
### Relationship of Parent with Student:

163 responses



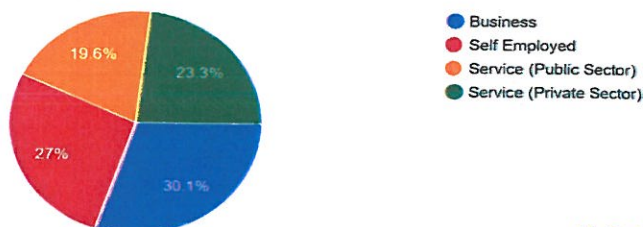
### Highest Educational Qualifications of the Parent

163 responses



### Occupation of the Parent:

163 responses



*Tanvi Gupta*  
Chairperson  
Feedback Committee  
K R Mangalam University  
Gurugram, Haryana

*Raj*  
Registrar  
K R Mangalam University  
Sohna Road, Gurugram (Haryana)

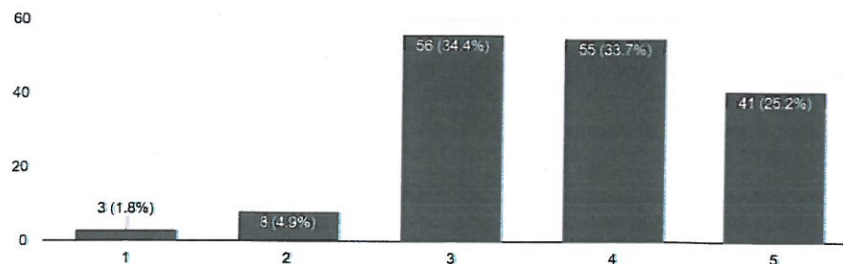
**Section I: Curriculum Design and Development**  
(N= 163)

S. No	Statement	Strongly Disagree		Disagree		Neutral		Agree		Strongly Agree	
		N	%	N	%	N	%	N	%	N	%
1	Rate the quality and relevance of courses included in this academic session that have been studied by your ward, in terms of its relevance for next level academic goals (higher education/placements).	3	1.8	8	4.9	56	34.4	55	33.7	41	25.2
2	Rate the course curriculum in terms of developing entrepreneurship skills in your ward to initiate start-ups by University Incubation Centre.	10	6.1	17	10.4	53	32.5	51	31.3	32	19.6
3	Rate the outcomes that your ward has achieved after studying the courses in this academic session.	3	1.8	11	6.7	44	27	64	39.3	41	25.2

**\*On 5 point rating scale**

Poor-1  
Average-2  
Good-3  
Very Good-4  
Excellent-5

Rate the quality and relevance of courses included in this academic session that have been studied by your ward, in terms of its relevance for next level academic goals (higher education/placements).  
163 responses



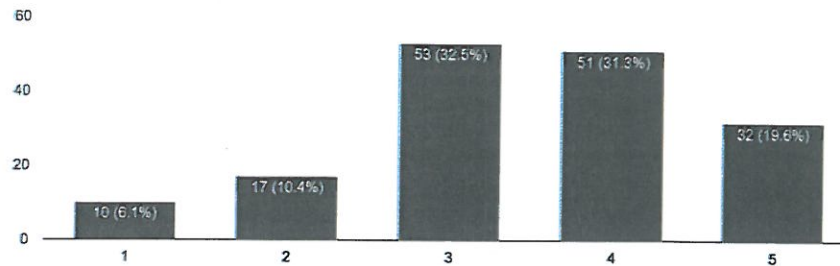
*Tane Gupta*  
Chairperson  
Feedback Committee  
K R Mangalam University  
Gurgaon, Haryana

*R3*  
Registrar  
K R Mangalam University  
Sohna Road, Gurugram (Haryana)



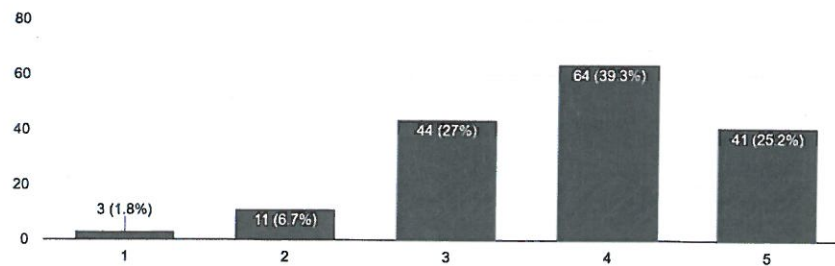
Rate the course curriculum in terms of developing entrepreneurship skills in your ward to initiate start-ups by University Incubation Centre.

163 responses



Rate the outcomes that your ward has achieved after studying the courses in this academic session.

163 responses



## Section II: Teaching-Learning, Evaluation and Student Support (N= 163)

S. No	Statement	Strongly Disagree		Disagree		Neutral		Agree		Strongly Agree	
		N	%	N	%	N	%	N	%	N	%
4	Rate the quality of teaching and training provided to your ward.	6	3.7	5	3.1	40	24.5	66	40.5	46	28.2
5	Rate the adequacy of physical and infrastructural facilities of the University.	4	2.5	14	8.6	46	28.2	61	37.4	38	23.3
6	Rate the quality of academic and support facilities for learning provided by the University.	5	3.1	7	4.3	55	33.7	58	35.6	38	23.3

*Chairperson*  
Feedback Committee  
K R Mangalam University  
Gurgaon, Haryana

*Registrar*  
K R Mangalam University  
Sohna Road, Gurugram (Haryana)



7	Rate the initiatives by the University to encourage participation of your ward in seminars, workshops, projects, industrial/field visits, internships.	8	4.9	7	4.3	46	28.2	56	34.4	46	28.2
8	Rate the initiatives of the University for holistic development of your ward through co-curricular, cultural, sports and extension activities.	10	66.1	12	7.4	47	28.8	59	36.2	35	21.5
9	Rate the development of soft skills and sensitivity of your ward towards issues like gender equality, environment and sustainability, ethics through curricular and co-curricular activities while studying in the University.	7	4.3	9	5.5	43	26.4	58	35.6	46	28.2
10	Rate the effectiveness of continuous evaluation mechanism of the University.	3	1.8	12.	7.4	51	31.3	59	36.2	38	23.3
11	Rate the effectiveness of Student Mentoring and Counseling Services for academic and	7	4.3	11	6.7	40	24.5	62	38	43	26.4

Chairperson  
Feedback Committee  
K R Mangalam University  
Gurgaon, Haryana

Registrar  
K R Mangalam University  
Sohna Road, Gurugram (Haryana)



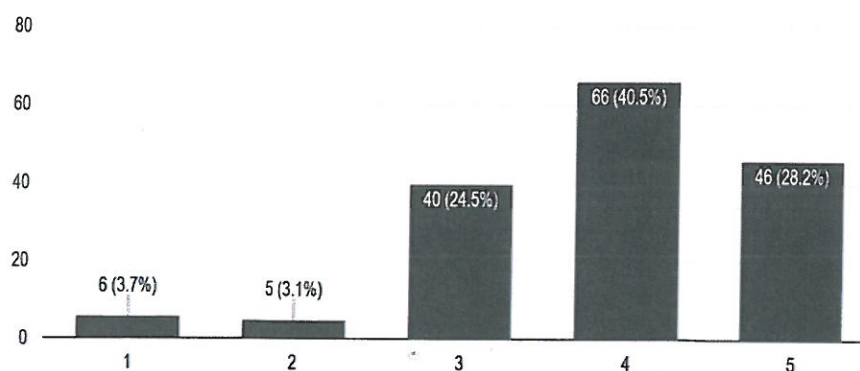
	other related issues of students.										
12	Rate the career orientation and placement support provided by the University.	16	9.8	14	8.6	59	36.2	36	22.1	38	23.3
13	The University offered good campus facilities and learning ambience to your ward.	Yes: (84 %) No: (16%)									
14	You recommend KRMU to your siblings, friends, relatives, etc for their higher studies.	Yes: (69.9 %) No: (30.1 %)									

**\*On 5 point rating scale**

Poor-1  
Average-2  
Good-3  
Very Good-4  
Excellent-5

Rate the quality of teaching and training provided to your ward.

163 responses

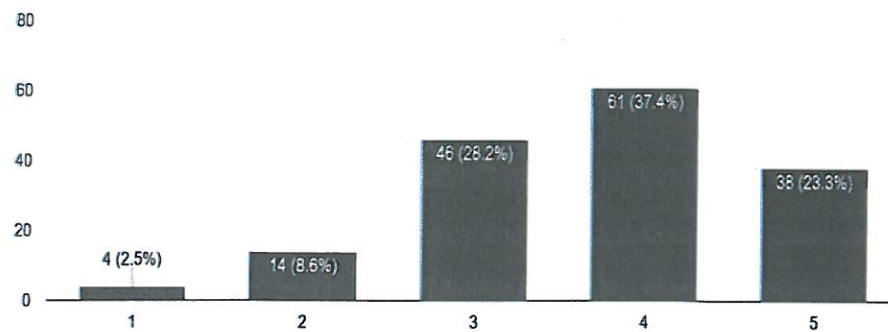


*Law Singh*  
Chairperson  
Feedback Committee  
K.R Mangalam University  
Gurugram, Haryana

*R3*  
Registrar  
K R Mangalam University  
Sohna Road, Gurugram (Haryana)

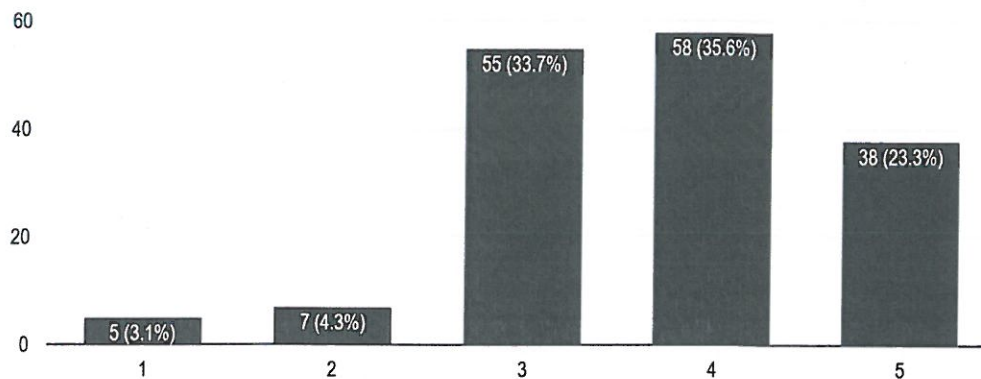
Rate the adequacy of physical and infrastructural facilities of the University.

163 responses



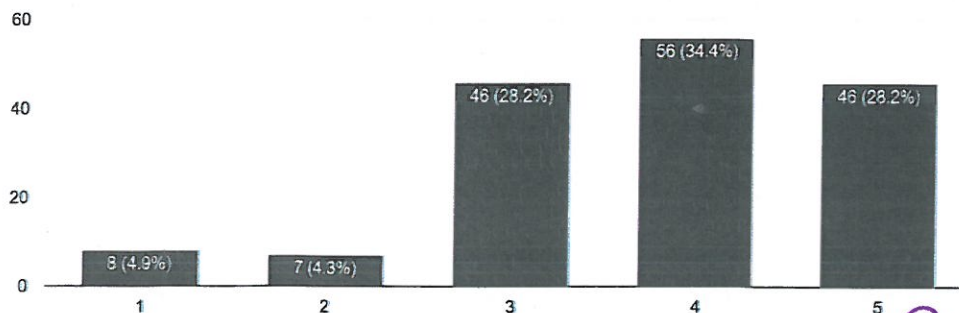
Rate the quality of academic and support facilities for learning provided by the University.

163 responses



Rate the initiatives by the University to encourage participation of your ward in seminars, workshops, projects, industrial/field visits, internships.

163 responses



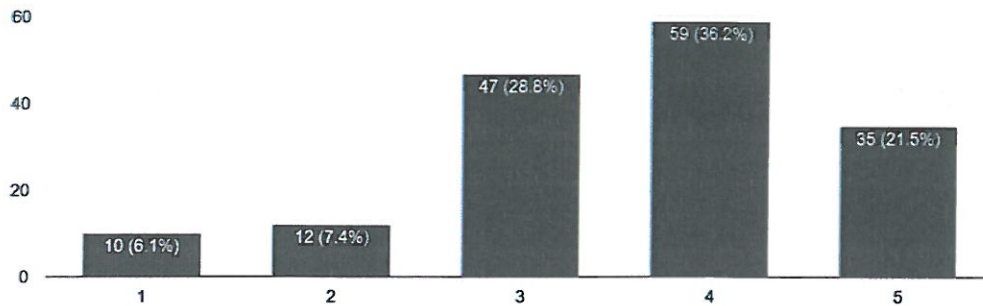
*Tane Singh*  
Chairperson  
Feedback Committee  
K R Mangalam University  
Gurugram, Haryana

*R3*  
Registrar  
K R Mangalam University  
Sohna Road, Gurugram (Haryana)



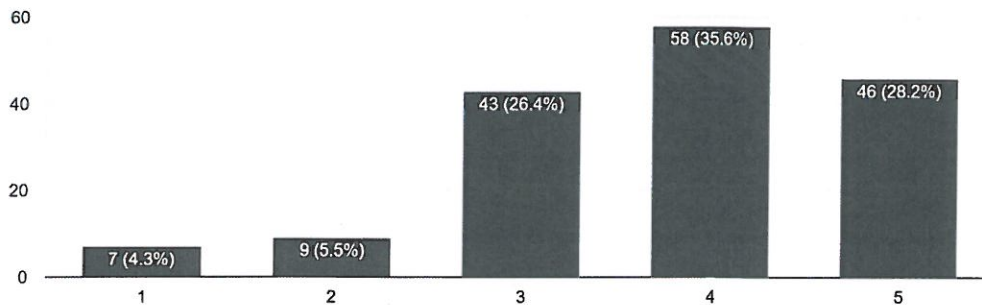
Rate the initiatives of the University for holistic development of your ward through co-curricular, cultural, sports and extension activities.

163 responses



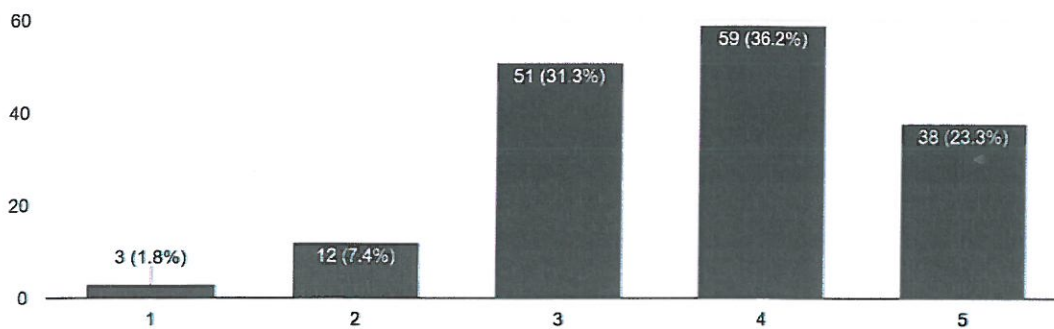
Rate the development of soft skills and sensitivity of your ward towards issues like gender equality, environment and sustainability, ethics through curricular activities while studying in the University.

163 responses



Rate the effectiveness of continuous evaluation mechanism of the University.

163 responses

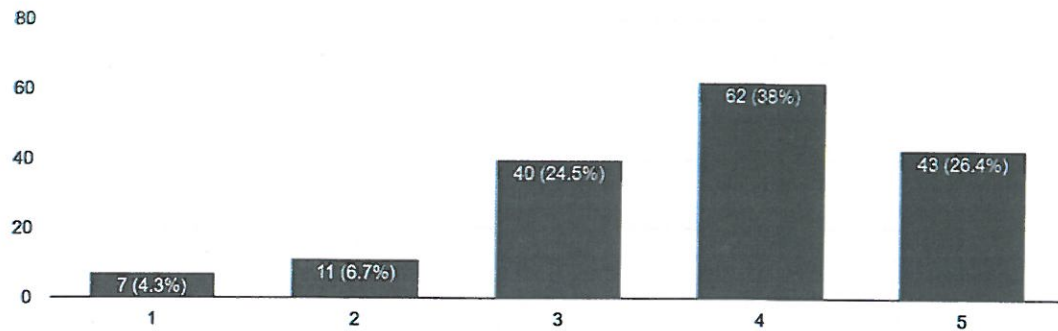


*Tane Gupta*  
Chairperson  
Feedback Committee  
K R Mangalam University  
Gurugram, Haryana

*[Signature]*  
Registrar  
K R Mangalam University  
Sohna Road, Gurugram (Haryana)

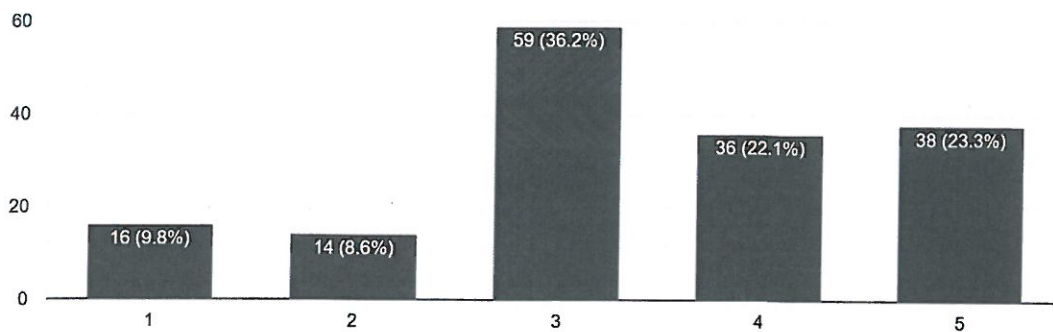
Rate the effectiveness of Student Mentoring and Counseling Services for academic and other related issues of students.

163 responses



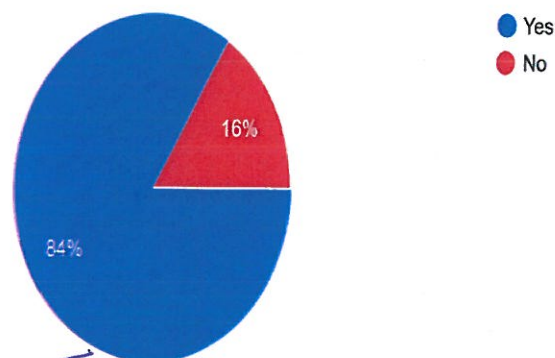
Rate the career orientation and placement support provided by the University.

163 responses



The University offered good campus facilities and learning ambience to your ward.

163 responses



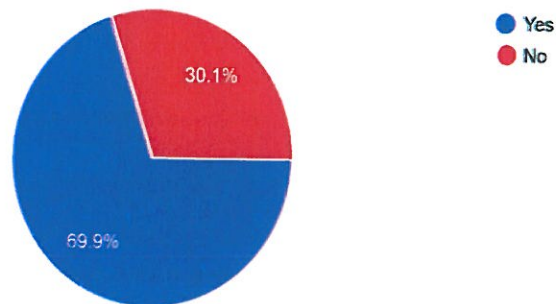
*Tamir Singh*  
Chairperson  
Feedback Committee  
K.R. Mangalam University  
Gurugram, Haryana

*13*  
Registrar  
K R Mangalam University  
Sohna Road, Gurugram (Haryana)



You recommend KRMU to your siblings, friends, relatives, etc for higher studies.

163 responses




### Section III: Suggestions

15 Please give suggestions if any.

- To explore more diverse Job Profiles.
- More Training Sessions for teachers to better counsel the students towards Career Prospects.
- More Attention for individualised development of the student.
- Internships should be there from the very beginning of the degree programme.
- Please ensure preparation facilities of variety of competitive exams.
- There should be scope for leisure time for students.
- 24 hrs Physical Library Facility.
- More canteens should be opened.
- Better processing of Documents after admission of the student.

  
**Prof. (Dr.) Tania Gupta**  
Chairperson, Feedback Committee  
K.R Mangalam University

  
**Dr. Rahul Sharma**  
Registrar  
K.R Mangalam University

Chairperson  
Feedback Committee  
K.R Mangalam University  
Gurugram, Haryana

  
Registrar  
K R Mangalam University  
Sohna Road, Gurugram (Haryana)